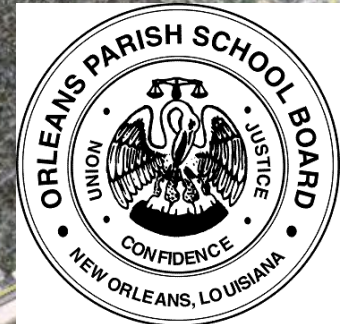
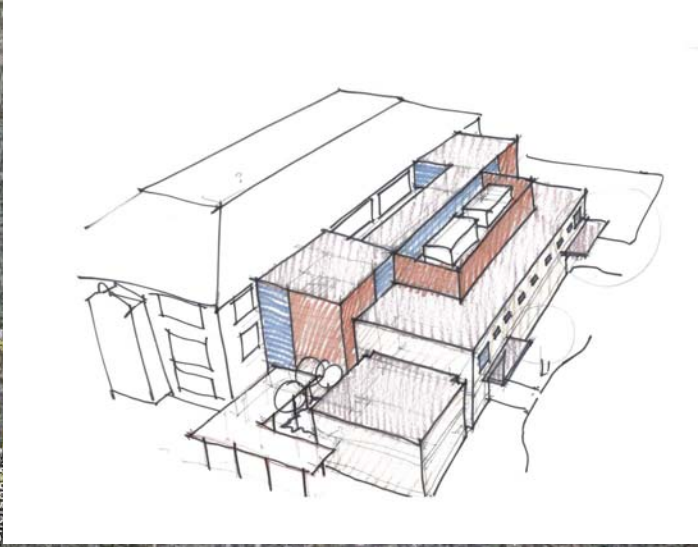


EAST BANK SWING SPACE UPDATE

May 9, 2011



A full Renovation and Addition to the Audubon School on Broadway Avenue is underway. Construction will begin in the Fall of 2011.



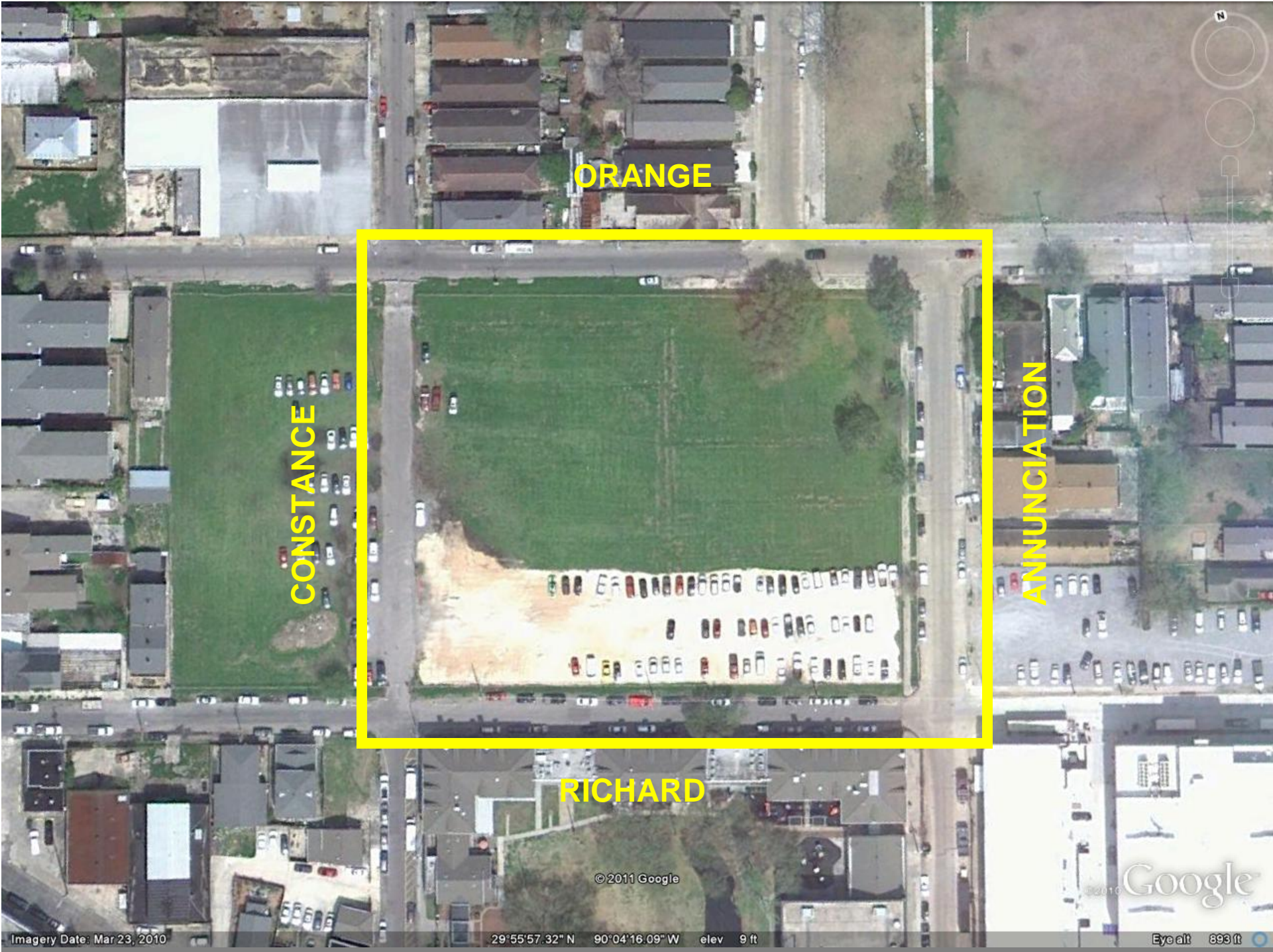
The Renovation and Addition Project will require the school to relocate to a temporary campus for 24 months.





The site is a tract of land bound by Richard, Constance, Orange, and Annunciation Streets.

Modular buildings will be placed on the site in order to facilitate the project.



ORANGE

CONSTANCE

ANNUNCIATION

RICHARD

© 2011 Google

Google

Imagery Date: Mar 23, 2010

29°55'57.32" N 90°04'16.09" W elev 9 ft

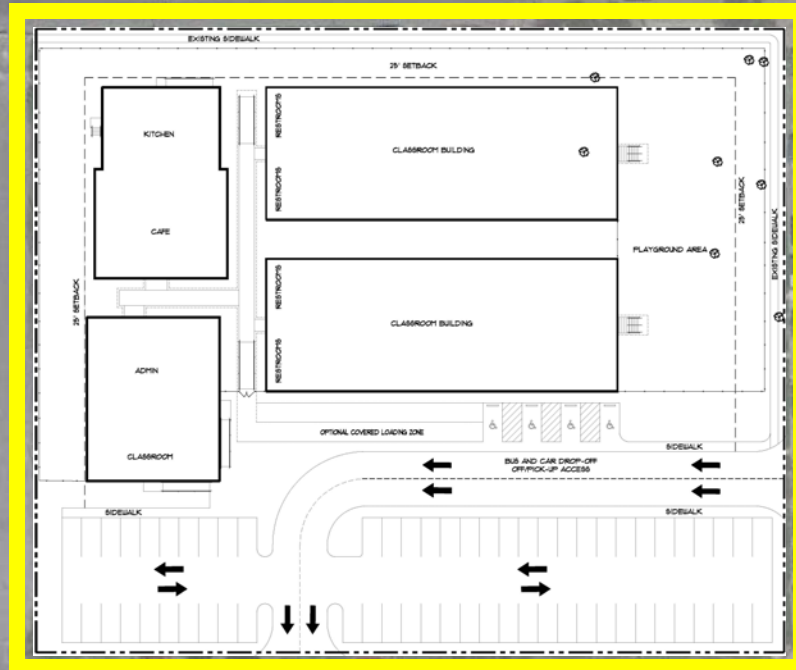
Eye alt 893 ft

ORANGE

CONSTANCE

ANNUNCIATION

RICHARD



Exterior Views

Typical Units



Interior Views

Typical Unit



Interior View Typical Units



Schedule:

Design Completion....May 17, 2011

Permitting.....May 17, 2011

Construction Starts....May30, 2011

Completion.....July 26, 2011

F, F, & E Move-In.....July 27, 2011

Staff Move-In.....August 4, 2011

School opens.....August 11, 2011

Executive Summary

Background

Materials Management Group, Inc. (MMG) was contracted by Jacobs/CSRS to conduct an investigation of lead in surface soil at the proposed Orleans Parish Annunciation Modular Campus, located in the city block bordered by Orange St. to the north, Annunciation St. to the east, Richard St. to the south, and Constance St. to the west.

Investigation

The purpose of this investigation was to determine whether lead contamination is present in surface soil at the proposed playground on the east side of the campus along Annunciation St. Specifically, the scope of services for the investigation included the following:

- Conduct soil sampling by LDEQ-certified Lead Inspectors or Lead Risk Assessors based on a grid sampling design;
- Collect and analyze surface soil samples in accordance with government published protocols and/or standard procedures;
- Determine the area to be mitigated based on the current USEPA and LDEQ soil standards.

Findings

A total of 43 soil samples were collected. The soil lead results ranged from 660 to 6,000 mg/kg (or ppm) for all collected samples. All the samples collected exceeded the current USEPA and LDEQ soil lead standard of 400 mg/kg. The aerial distribution of each soil sample is included in Figure 1.

Conclusions and Recommendations

Based on the findings, MMG recommends mitigation of the soil areas at the proposed playground to remove potential lead hazards that pose a risk to young children using this playground. The mitigation procedures may include interim controls, such as covering with low lead clean soil followed by placement of sod, or permanent remediation, such as soil replacement or encapsulation by concrete.

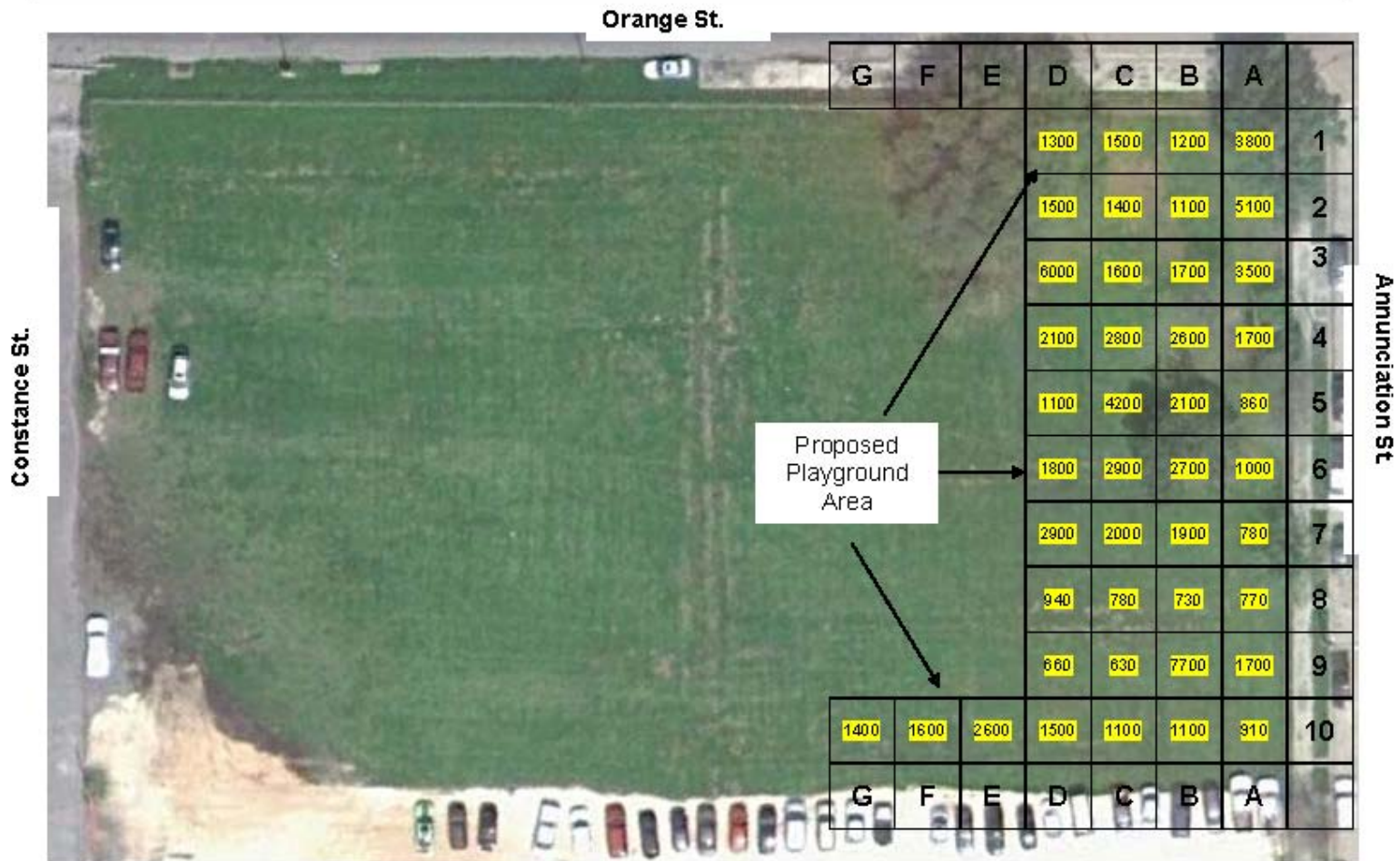


Figure 1. Soil Lead Results at the Proposed Playground inside the Orleans Parish Annunciation Modular Campus

Mitigation Plan

- OPSB will follow the recommendations outlined in the report
- The Materials Management Group is developing plans and specifications
- When the specifications are complete, OPSB will provide additional updates